



20 Myall Street Ettalong Beach NSW

3  2  2 

Discover a rare find in the heart of Ettalong Beach - a versatile property brimming with possibilities! This substantial family home, nestled on a generous corner block with triple street frontage and rear lane access, offers an enviable lifestyle and exciting development potential (STCA).

Type : House
Price : \$ 1,110,000
Land Size : 493.2 sqm
View : <https://www.wilsonsproperty.com.au/sale/nsw/central-coast-region/ettalong-beach/residential/house/8223601>

Embrace the Coastal Lifestyle:

Spacious living: Enjoy multiple living areas, a second kitchenette upstairs, three generously sized bedrooms and a customised study.

Low-maintenance living: Relax and unwind on the level grounds, perfect for families and those who prefer a carefree lifestyle.

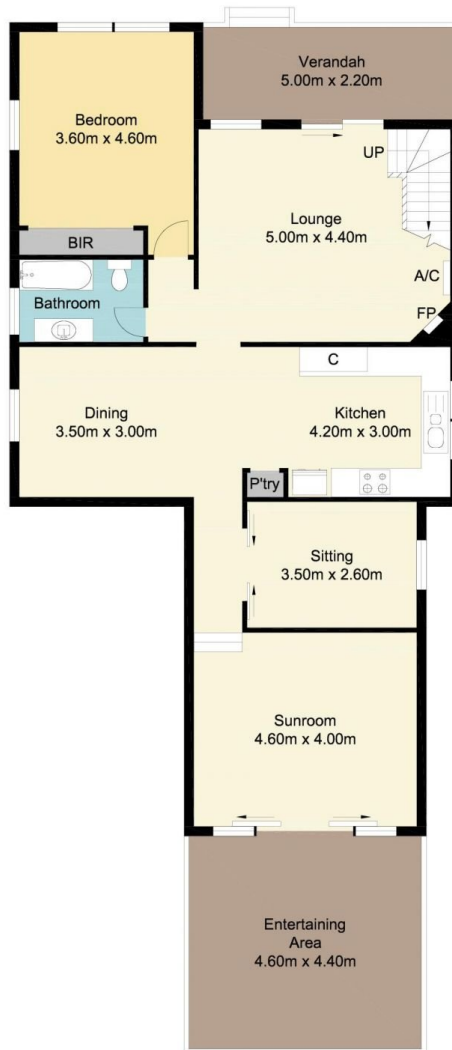
[For full version visit the website](https://www.wilsonsproperty.com.au)



Andrew Quilkey
02 4344 2511



Jessica Warren
02 4344 2511



Ground Floor



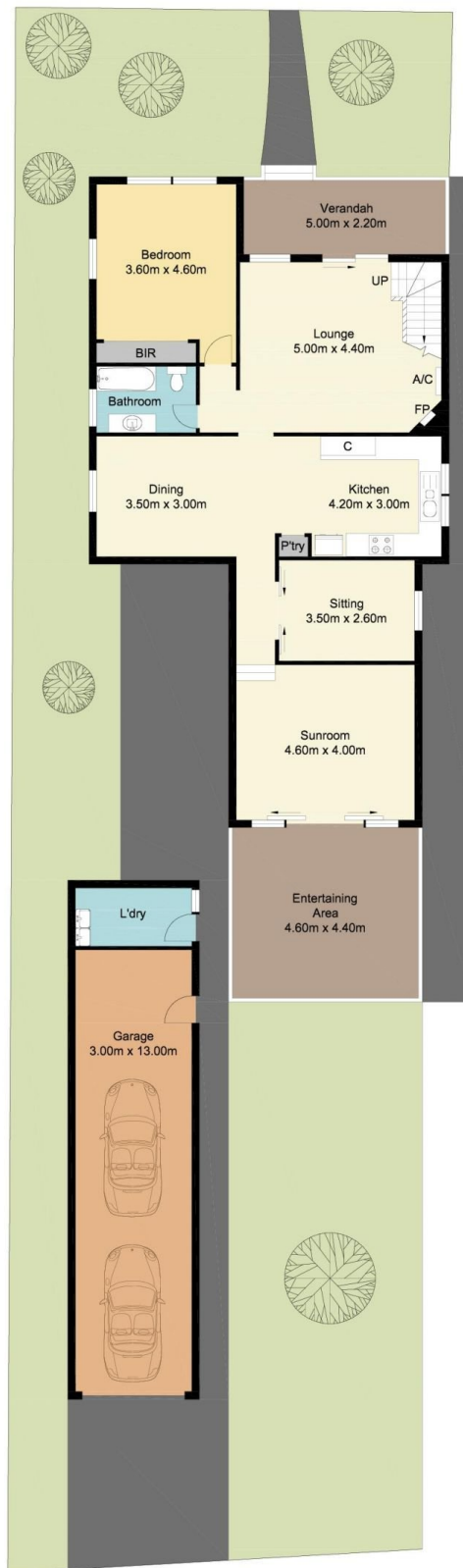
First Floor



20 Myall Street, Ettalong Beach

Total Approx Floor Area 234.24 sq.m

Measurements are approximate. Not to scale. Illustrative purposes only. Boundaries are approximate.



Rear Lane Access

Site Plan

20 Myall Street, Ettalong Beach

Measurements are approximate. Not to scale. Illustrative purposes only. Boundaries are approximate.