



503/51-54 The Esplanade Ettalong Beach NSW

1  1 

This light and airy apartment is available in the Mantra complex at the beautiful Ettalong Beach. This property boasts a unique blend of comfort and style that is surpassed only by the beach side lifestyle Ettalong has to offer.

Very few investment opportunities become available like this one and it is a chance to own a piece of the action, do not miss out.

Property features include:

- Cooking facilities
- Part of the mantra pool for hotel bookings
- Access to amenities such as pool, underground parking etc...
- Direct access to Ettalong Memorial Club

Price : FOR SALE - CONTACT AGENT

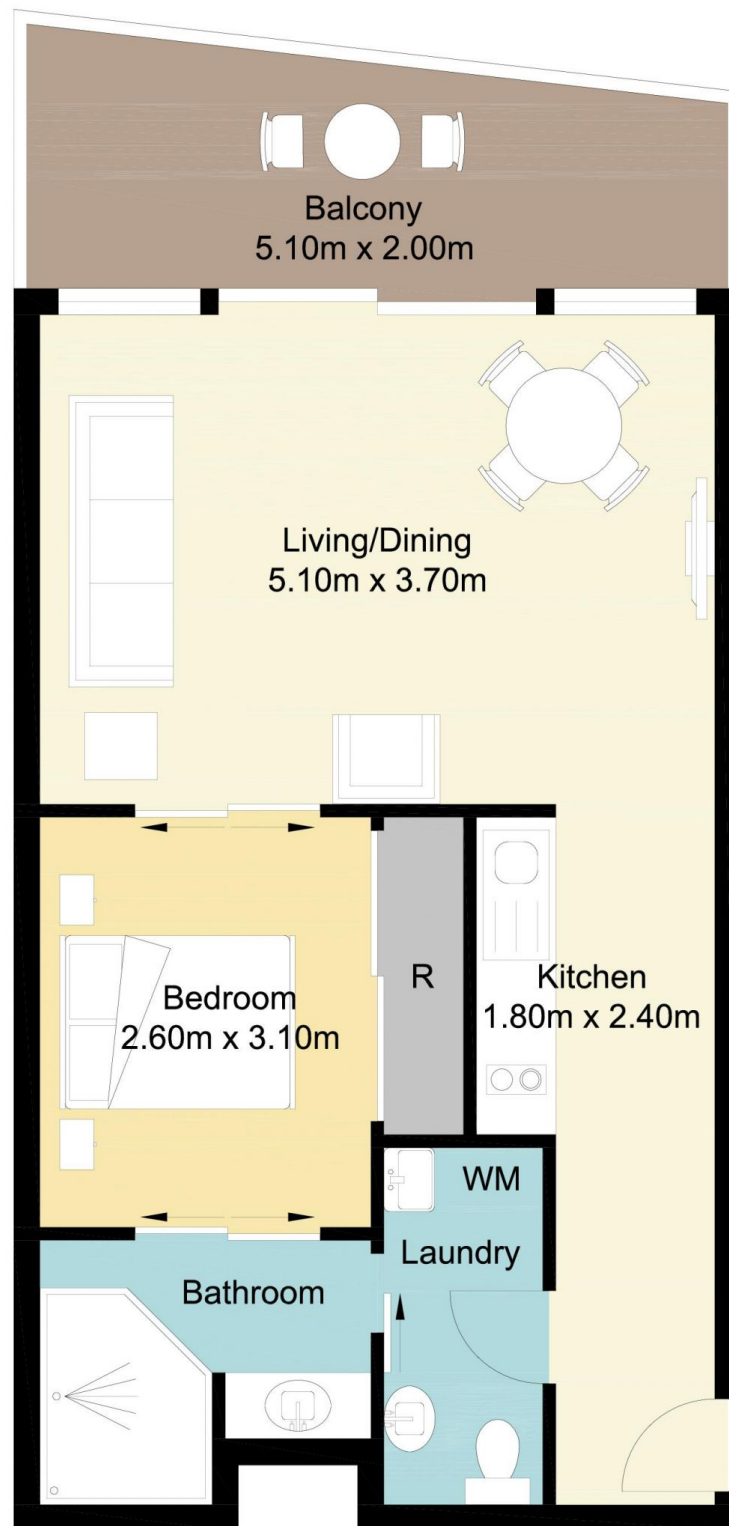
View : <https://www.wilsonsproperty.com.au/sale/nsw/central-coast-region/ettalong-beach/residential/apartment/7946464>



Ty Reynolds
02 4344 2511



Ian Willis
02 4344 2511



503/53 The Esplanade, Ettalong Beach

Total Approx Floor Area 45.25 sq.m

Measurements are approximate. Not to scale. Illustrative purposes only. Boundaries are approximate.