



3 Moruya Close Koolewong NSW

4  1  2 

Set in a popular pocket of Koolewong, this versatile residence would make a perfect home for all families alike.

Key features of the property include:

- 4 bedrooms (possible 5th)
- Upstairs and downstairs living
- Level 805 sqm2 parcel of land
- Large covered sunroom
- Light filled interiors
- Great amount of parking double carport
- Entertaining area
- 2nd toilet
- Great cul de sac location
- Approximately 12 minutes to M1
- Minutes to Shops, cafes & beaches
- Rental Appraisal available upon request

Price : \$930,000 - \$980,000

Land Size : 805 sqm

View : <https://www.wilsonsproperty.com.au/sale/nsw/central-coast-region/koolewong/residential/house/7897497>

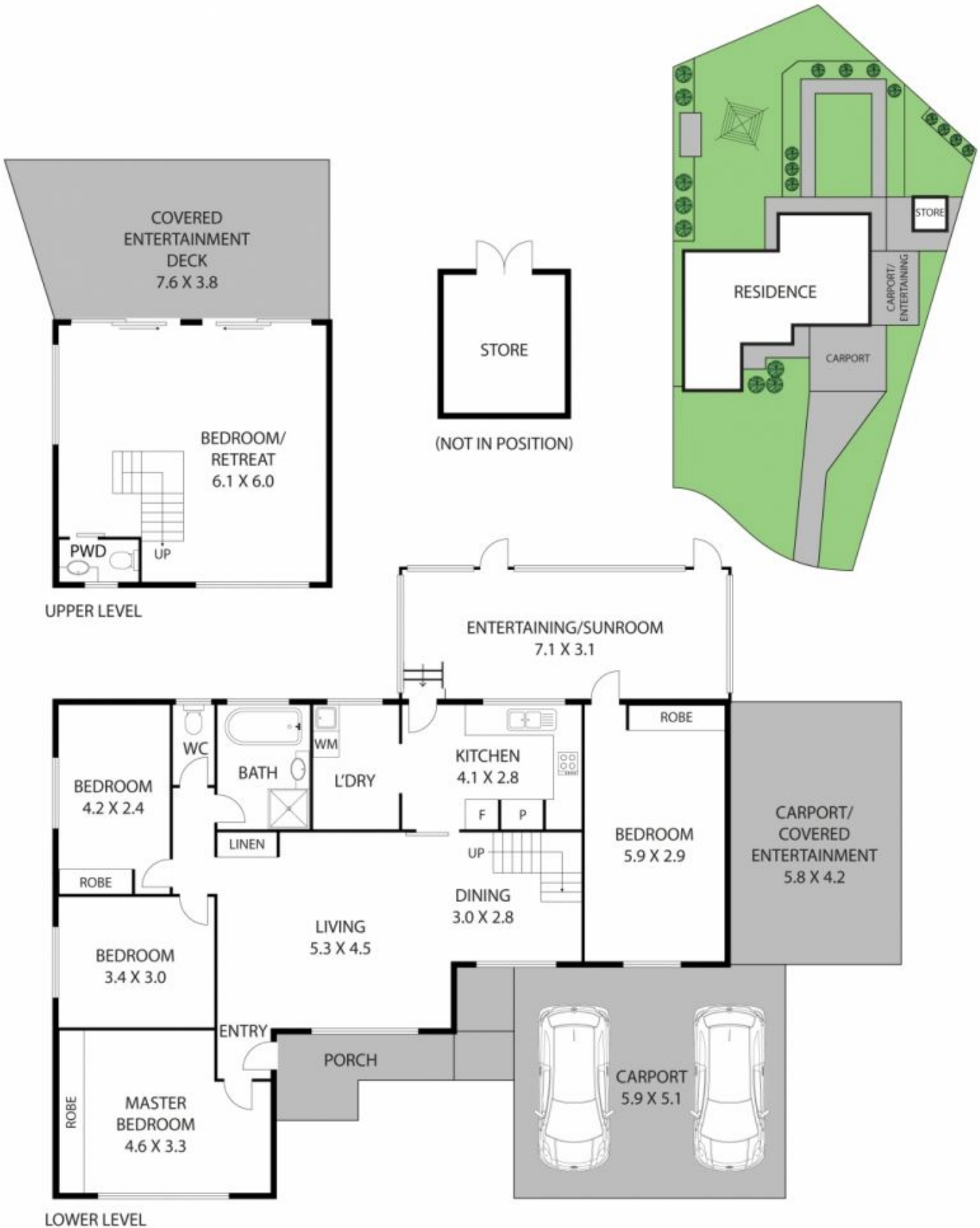


Ben Crain
02 4344 2511



Luke Brien
02 4344 2511

For all enquiries contact Your local Agent Ben Crain 0405



All dimensions herein are approximate and gathered from sources believed to be reliable. Whilst every effort is made for the accuracy of our floor plans, interested parties should rely on their own enquiries.

Internal Area : 150.7 m²
 External Area : 85.8 m²
 Land Size: 705 m²



3 MORUYA CL,
 KOOLEWONG

