



### 34 Camellia Circle Woy Woy NSW

3  1  1 

Long considered the best location in Woy Woy, the Garden of Adin was largely developed in the 1960's and sits in a quiet area between the waters edge and the town centre. Camellia Circle is located in the centre of the Garden and number 34 presents beautifully from the street with its red brick triple frontage.

Key features of this quality property include:

- Three bedroom brick & tile home
- Large living area with separate dining
- Updated kitchen
- Rear undercover entertaining area
- Single lock up garage
- Level 506m2 block of land

The train station can be reached via an 800m2 walk (approx) and it is even shorter to the waterfront reserve.

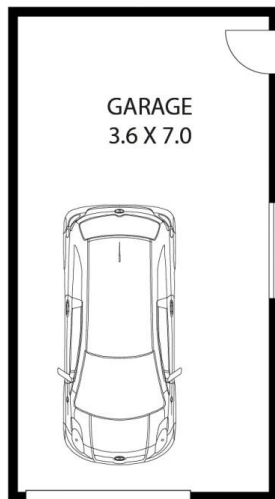
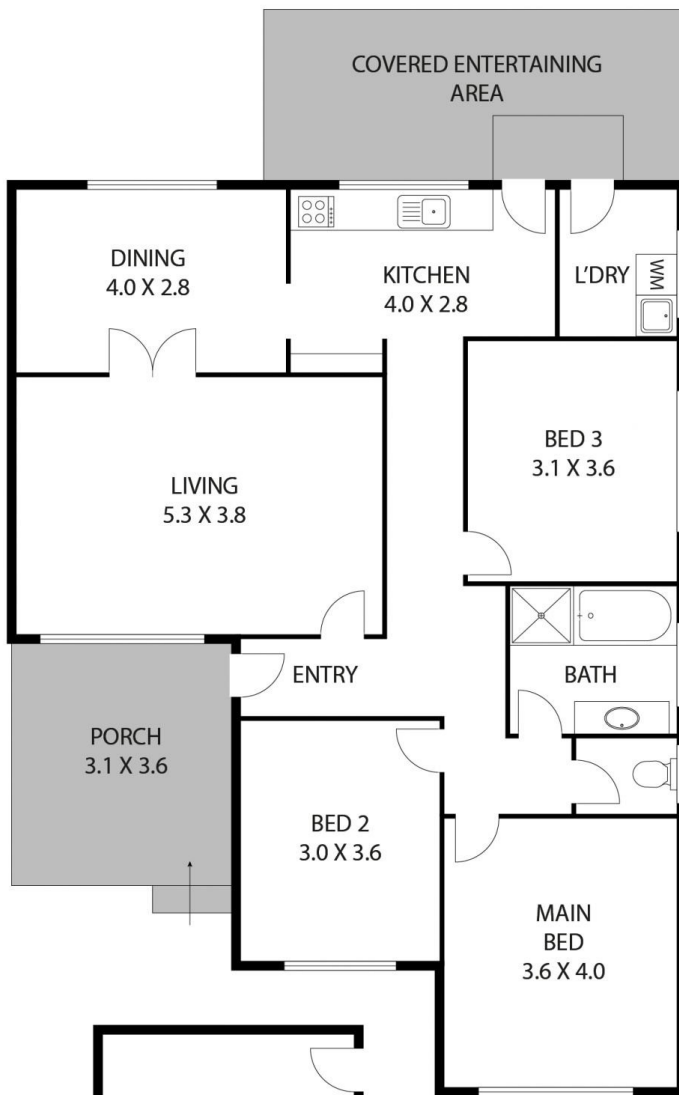
**Price** : \$ 967,000  
**Land Size** : 506 sqm  
**View** : <https://www.wilsonsproperty.com.au/sale/nsw/central-coast-region/woy-woy/residential/house/7877391>



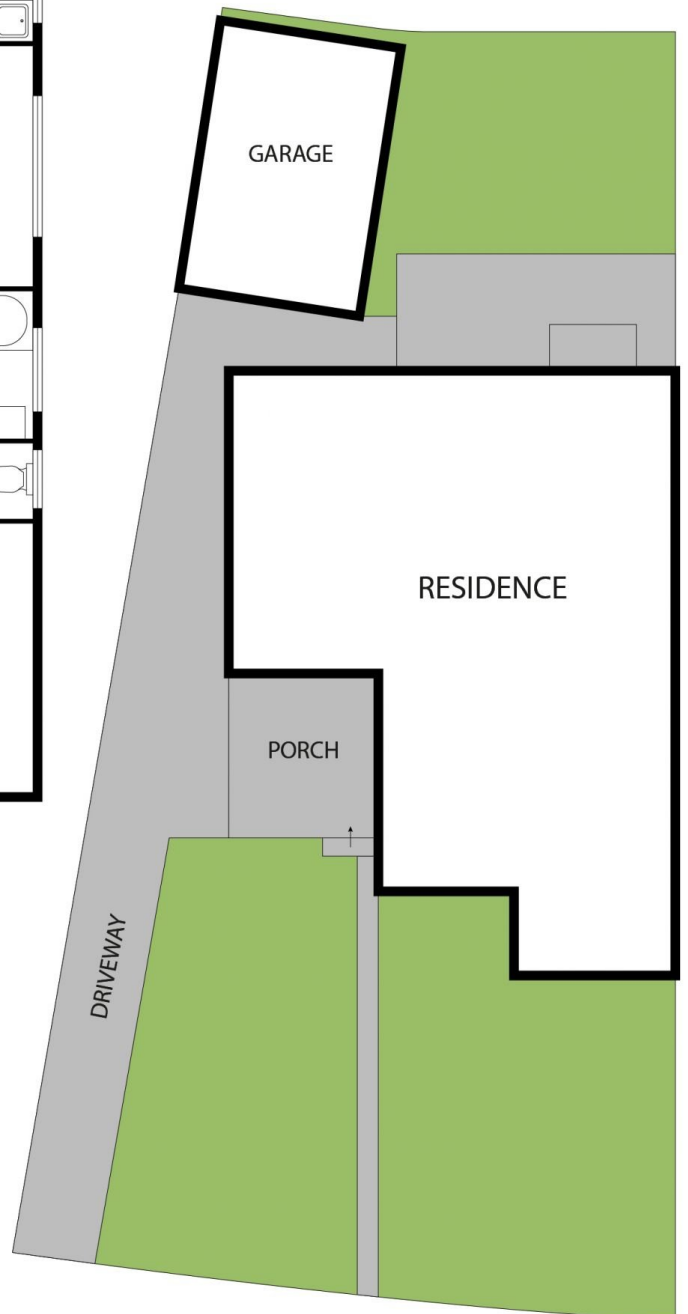
**Ian Willis**  
02 4344 2511



**Esmari Van Zyl**  
02 4344 2511



(NOT IN POSITION)



All dimensions herein are approximate and gathered from sources believed to be reliable. Whilst every effort is made for the accuracy of our floor plans, interested parties should rely on their own enquiries.

Internal Area: 110.9 m<sup>2</sup>  
 External Area: 28 m<sup>2</sup>  
 Land Size: 515 m<sup>2</sup>



34 CAMELLIA CIRCLE,  
 WOY WOY

**wilsons**  
 YOUR LOCAL AGENT