



25 Couche Crescent Koolewong NSW

6  4  4 

Nestled in a coveted waterfront setting, this remarkable property presents not one, but two exquisite 3-bedroom, 2-bathroom apartments, each offering awe-inspiring water vistas and unmatched serenity. A rare gem, this North-facing waterfront oasis sits on approximately 760sqm of level land, boasting a grand wide water frontage with a recently installed private jetty.

The property's versatile layout allows for a seamless transformation into a spacious single residence, perfect for accommodating a large family, or it can remain as is to generate additional rental income. Currently occupied by long-term tenants, both units offer a sense of comfort and luxury.

Highlighted features:
- Dual occupancy approval

Price : Auction
Land Size : 761 sqm
View : <https://www.wilsonsproperty.com.au/sale/nsw/central-coast-region/koolewong/residential/house/7845489>



Andrew Quilkey
02 4344 2511



Jessica Warren
02 4344 2511

Internal 263m² External 663m² Block Size 761m²

25 Couche Crescent, Koolewong



6 x 4 x 2 x

NORTH



NOTE: Every precaution has been taken to verify the accuracy of the above details. However, prospective purchasers are advised to make their own enquiries.

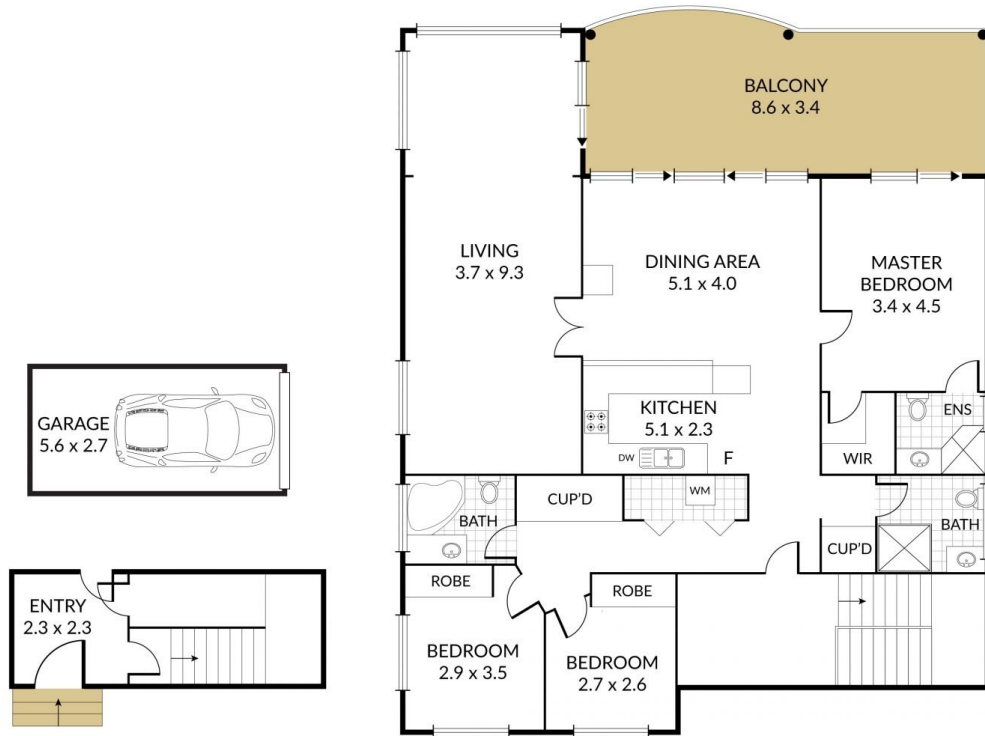
Internal 165m² External 27m² Total 192m²

2/25 Couche Crescent, Koolewong



3 x 3 x 1 x

NORTH



NOTE: Every precaution has been taken to verify the accuracy of the above details. However, prospective purchasers are advised to make their own enquiries.