



44 Palm Street Umina Beach NSW

4  2  2 

A near new residence with calming influences throughout, in an idyllic beachside location, residing in a cul-de-sac street on a flat block of land combine to offer a luxurious family home, within walking distance to Beach, Shops & Ettalong Beach waterfront precinct.

Designed with modern family living in mind with a real sense of space, functional living, work from home facilities and entertaining in mind, this home is sure to get snapped up quickly.

- Idyllic location where you can enjoy a Quiet Cul-de-sac, surrounded by quality homes, while having the convenience of being able to walk to everything you need, with the Beach, Umina Beach CBD and Local School all within 800m.

- Enjoy cooking up a storm in your new kitchen, Featuring stone breakfast bar and large Walk In Pantry and 900mm

Land Size : 462 sqm

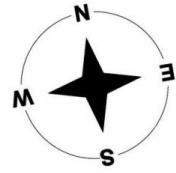
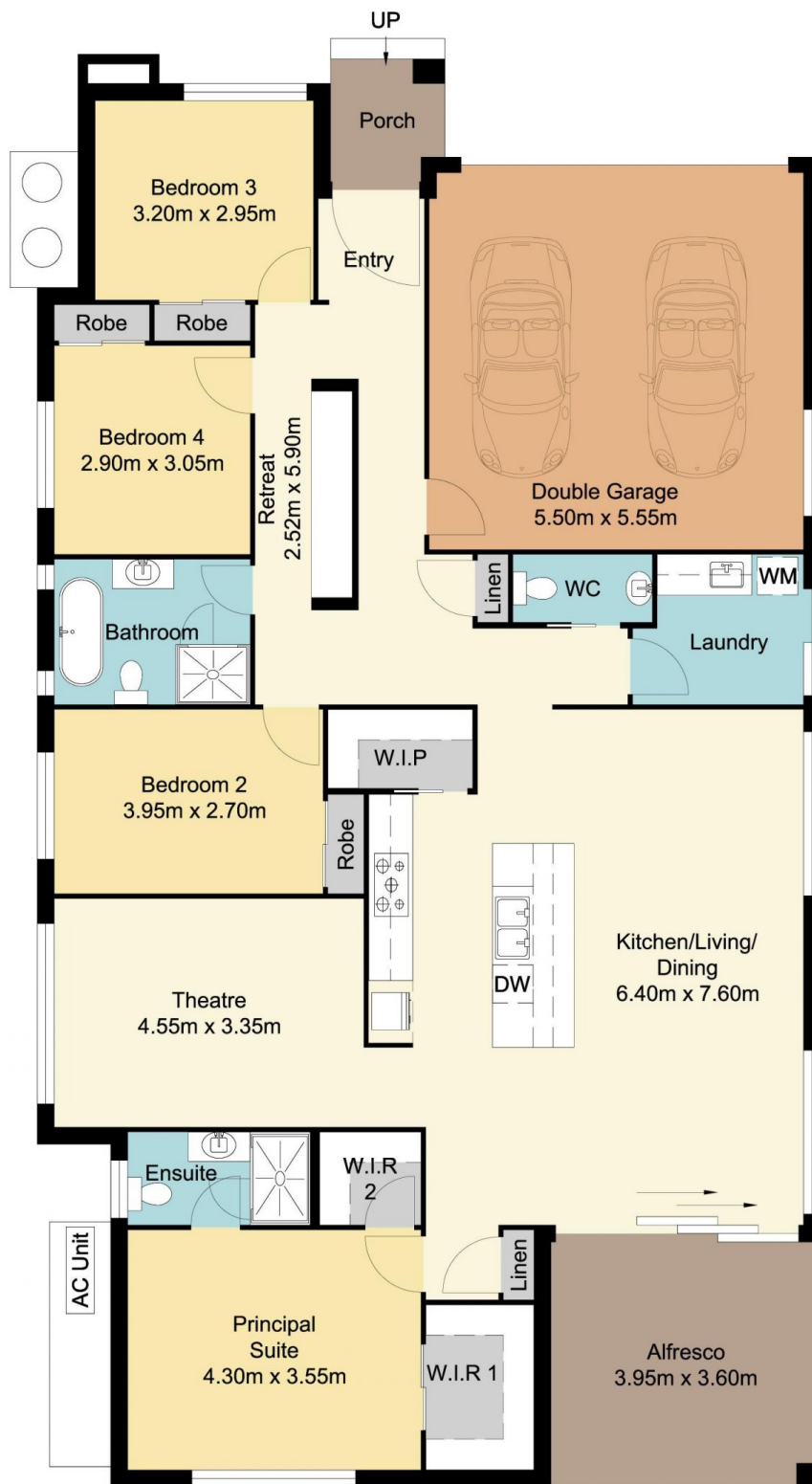
View : <https://www.wilsonsproperty.com.au/sale/nsw/central-coast-region/umina-beach/residential/house/7774295>



Andrew Quilkey
02 4344 2511



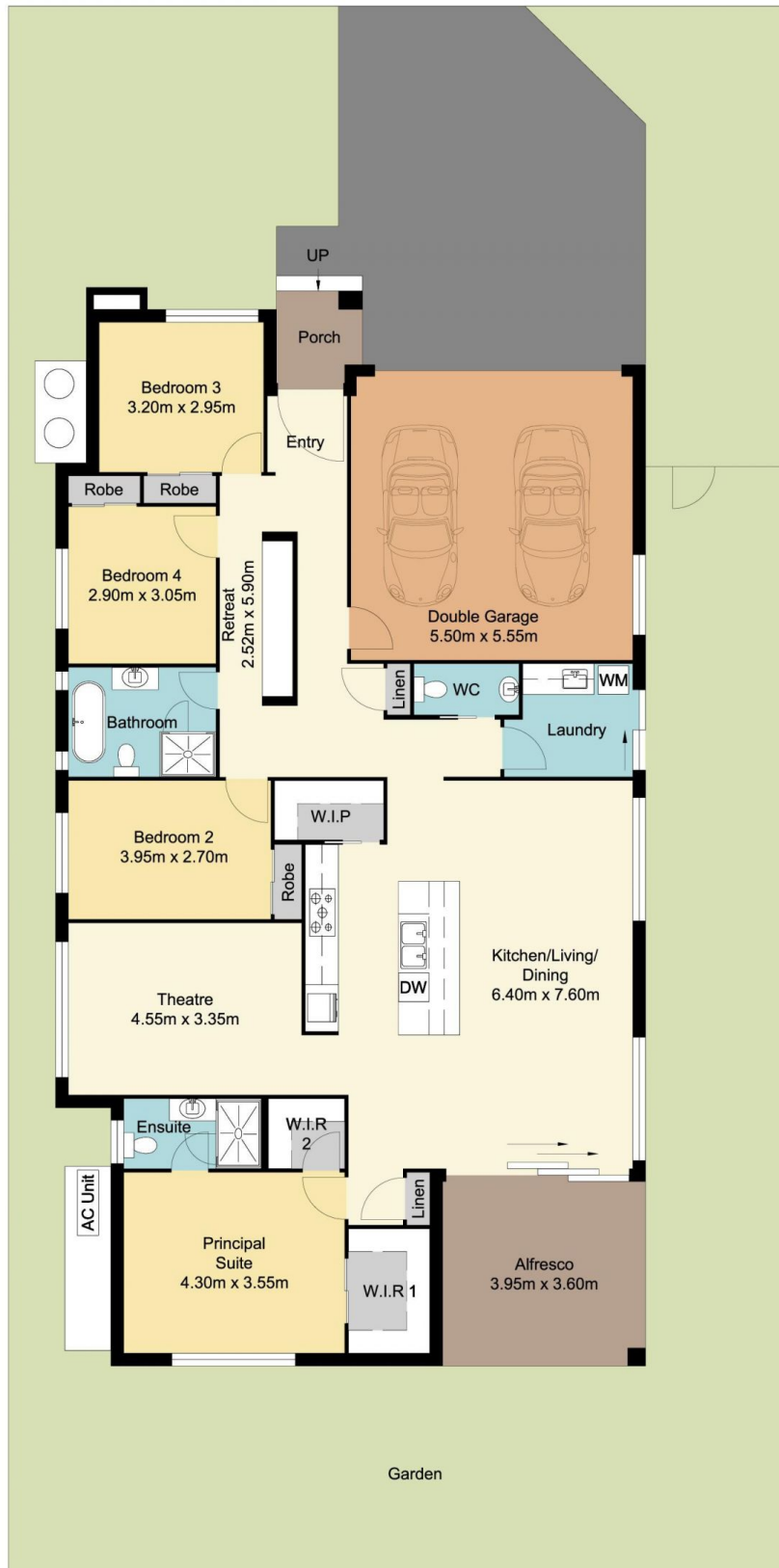
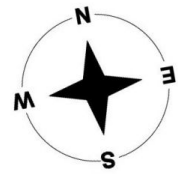
Ty Reynolds
02 4344 2511



44 Palm Street, Ettalong Beach

Total Approx Floor Area 191.81 sq.m

Measurements are approximate. Not to scale. Illustrative purposes only. Boundaries are approximate.



Site Plan

44 Palm Street, Ettalong Beach

Measurements are approximate. Not to scale. Illustrative purposes only. Boundaries are approximate.