




20 Watt Street Gosford NSW

12 

The building consists of approx 360m² of floor space upstairs and another approx 300m² of floorspace downstairs.

The building currently has a fitout of 9 office spaces and Reception area, waiting room, server room, kitchen, store room, his/hers toilets and disabled toilets and a large conference room. That is just upstairs.

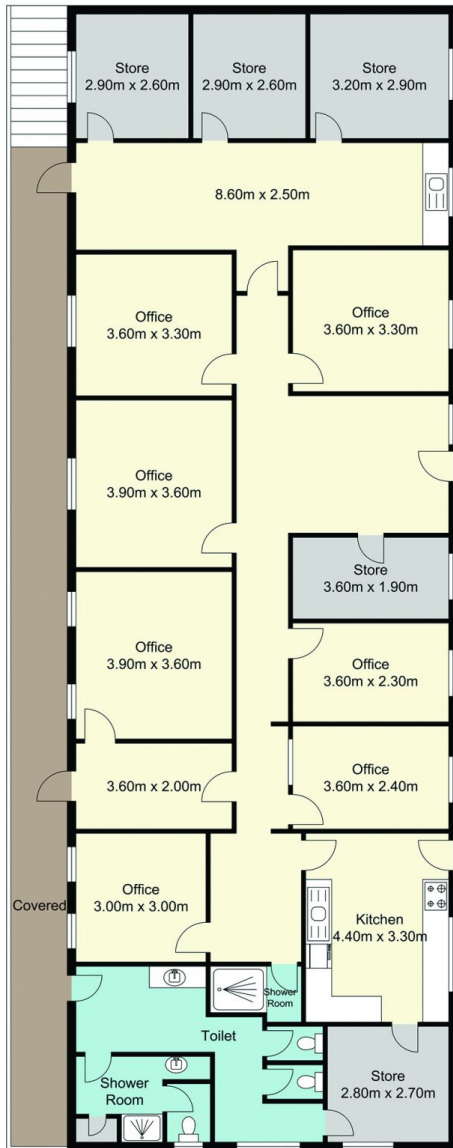
Downstairs is set up with office space and storage areas. This includes a full kitchen, toilets and showers.

Finally the building has 12 parking spaces and disabled access.

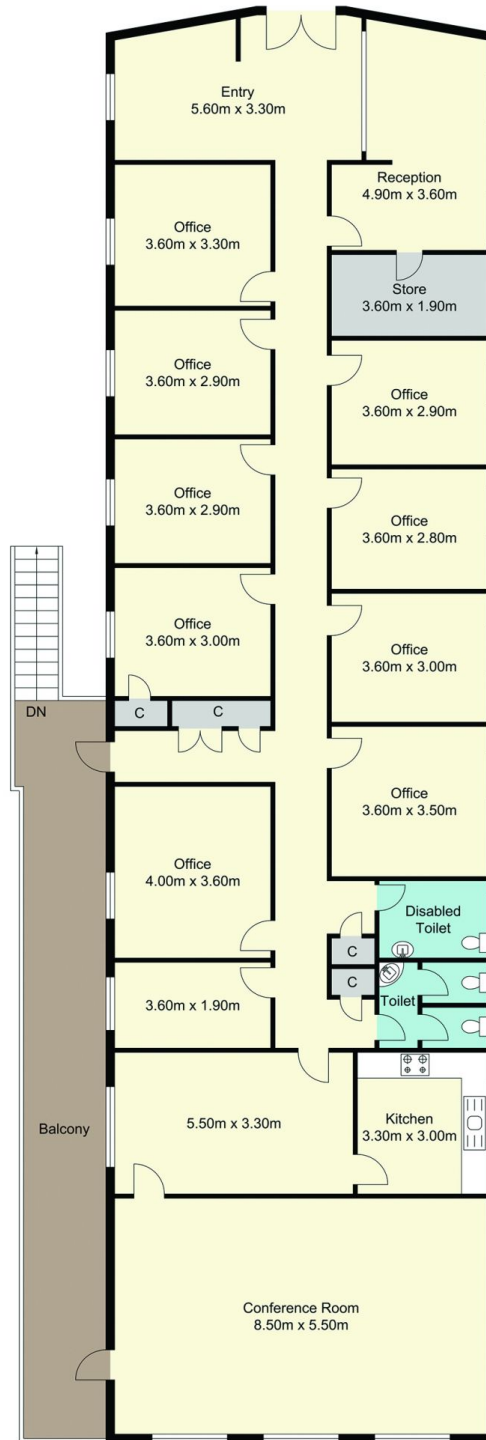
Price : Offers Considered
Building Size : 650 sqm
View : <https://www.wilsonsproperty.com.au/lease/nsw/central-coast-region/gosford/commercial/offices/7288475>



Greg Quilkey
02 4344 2511



Ground Floor



First Floor

20 Watt Street, Gosford

Total Approx. Floor Area 508.80 sq.m.

Measurements are approximate. Not to scale. For illustrative purposes only. Boundaries are approximate.

SITE PLAN



20 Watt Street, Gosford

Measurements are approximate. Not to scale. For illustrative purposes only. Boundaries are approximate.