



### 35 Sorrento Road Empire Bay NSW

4  2  3 

The ideal Empire Bay position - in a quiet corner block setting on approx 670sqm of land within a few mins walk to Empire Bay's public jetty & shops as well as the waterfront and play park across the road.

The superb two story house offers versatile family living through the downstairs open plan living rooms which flow onto an undercover entertaining deck & spacious easy care garden provides the perfect setting for this four bedroom contemporary style home.

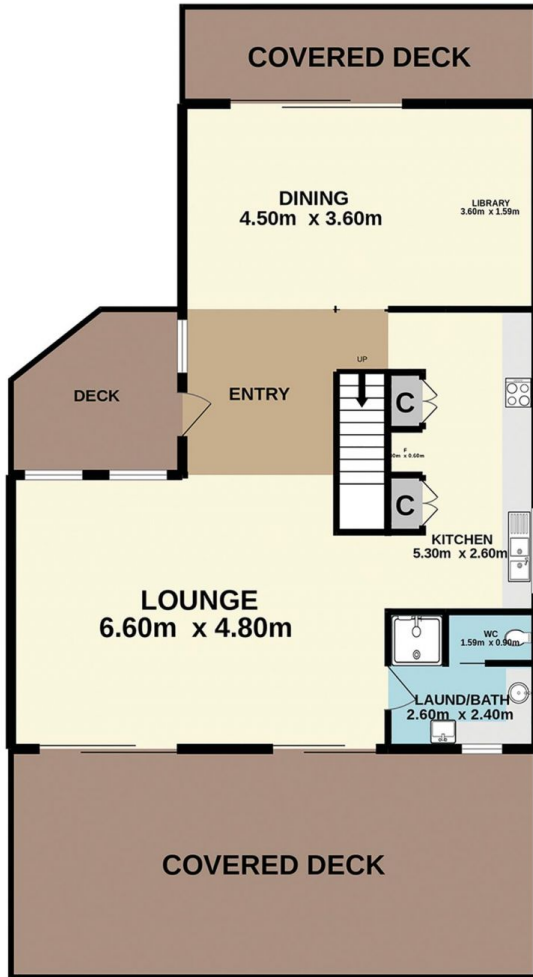
Fresh bright interiors which have been well maintained & several external decks all with different aspects of the homes surrounds from water views on the top floor to the private inground pool & garden on the lower level.

- Large open plan living areas
- Undercover hardwood entertaining deck
- Modern kitchen & bathrooms

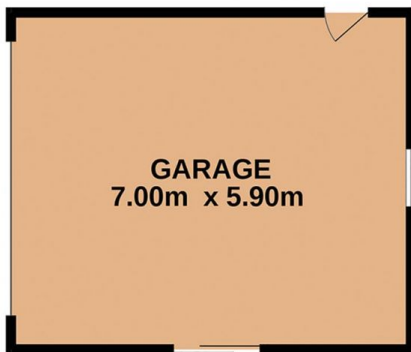
**Price** : \$ 1,400,000  
**Land Size** : 670 sqm  
**View** : <https://www.wilsonsproperty.com.au/sale/nsw/central-coast-region/empire-bay/residential/house/6985956>



**Andrew Quilkey**  
02 4344 2511



GROUND FLOOR  
125.7 sq.m. approx.



208.5 sq.m. approx.



1ST FLOOR  
82.8 sq.m. approx.



# 35 Sorrento Road, Empire Bay

Total Approx. Floor Area **208.5 sq.m.**

Measurements are approximate. Not to scale. For illustrative purposes only. Boundaries are approximate.

## SITE PLAN



35 Sorrento Road, Empire Bay

Measurements are approximate. Not to scale. For illustrative purposes only. Boundaries are approximate.