



### 5a Empire Bay Drive Daleys Point NSW

4  3  3 

In a world-class waterfront setting with breathtaking views across the sparkling waters of Brisbane Waters and surrounding National Parks. This four-bedroom waterfront house delivers an idyllic coastal lifestyle in a premier sunny position in the tightly held Daleys Point. Extensive use of glass sliding doors opening the home to the views & wraparound terraces maximise spectacular views from every possible position through out the home. Enjoy plenty of space for all the family over two-levels with multiple living areas and scope to update, renovate and/or create your dream seaside home on a deep waterfront block with huge sunny grounds, feature in-ground pool with sensational outlook, triple car garage as well as a large boat shed with slipway.

A sublime weekend or permanent residence where you relax in your waterfront surrounds or enjoy the areas facilities and swim at nearby beaches, kayak in the bay,

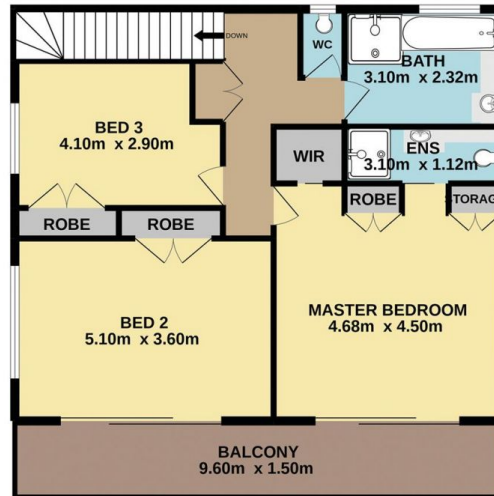
**Price** : \$ 3,050,000  
**Land Size** : 771 sqm  
**View** : <https://www.wilsonsproperty.com.au/sale/nsw/central-coast-region/daleys-point/residential/house/6925825>



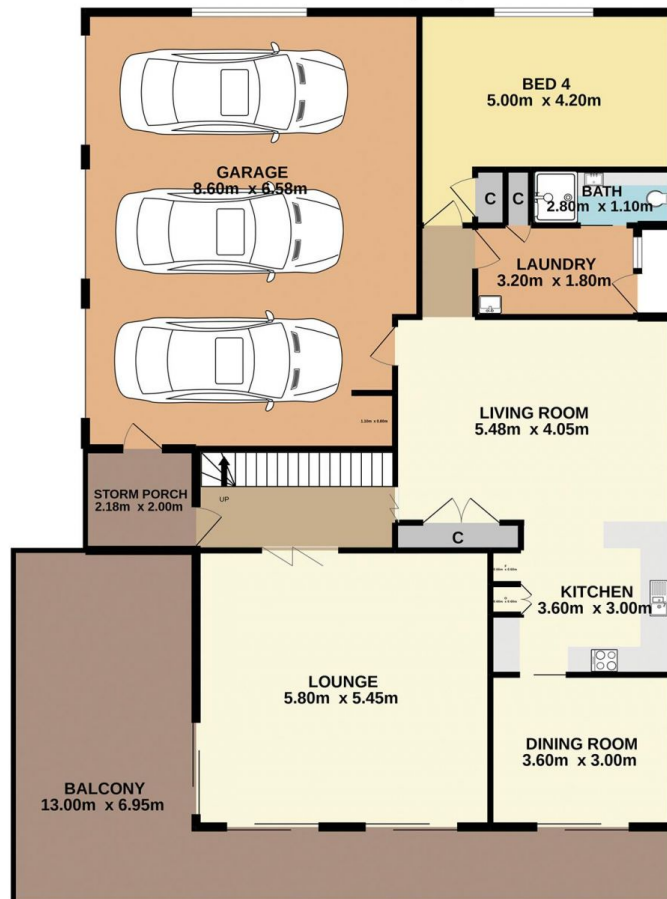
**Andrew Quilkey**  
02 4344 2511



**Ty Reynolds**  
02 4344 2511



1ST FLOOR  
77.9 sq.m. approx.



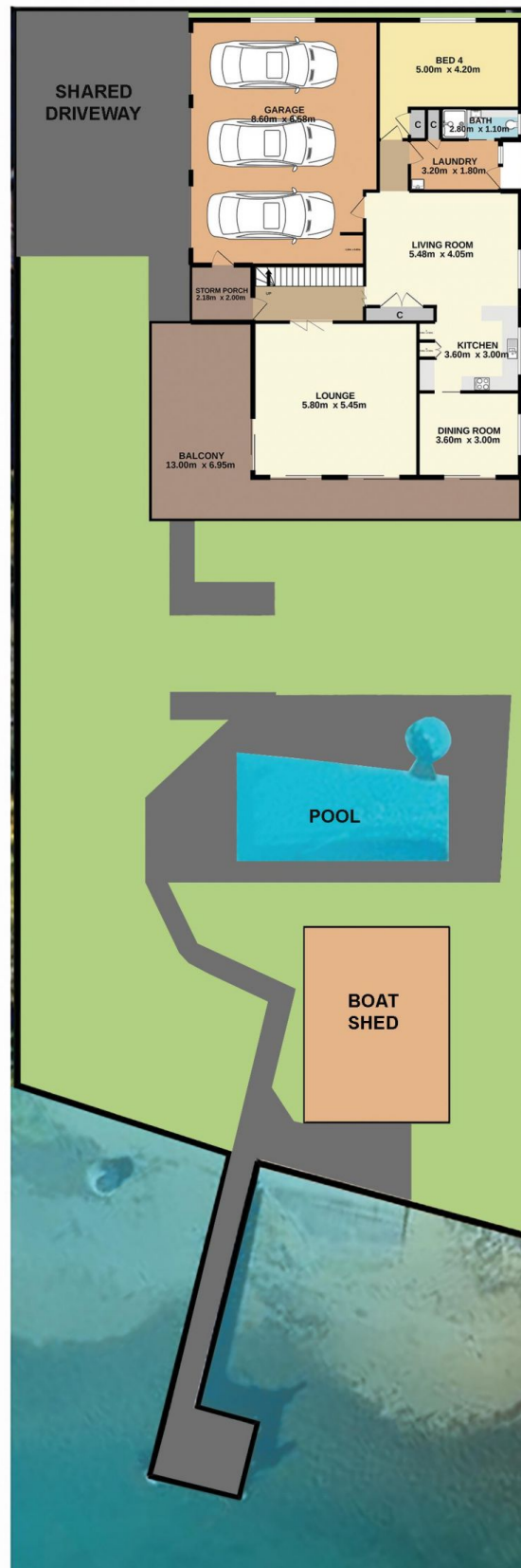
GROUND FLOOR  
168.3 sq.m. approx.

**5A Empire Bay Drive, Dayleys Point**

**Total Approx. Floor Area 246.2 sq.m.**

Measurements are approximate. Not to scale. For illustrative purposes only. Boundaries are approximate.

## SITE PLAN



# 5A Empire Bay Drive, Daleys Point

Measurements are approximate. Not to scale. For illustrative purposes only. Boundaries are approximate.