






10 Horsfield Road Horsfield Bay NSW

3  3  3 

This marvellous home is being offered for the first time in nearly 100 years. The property itself sits on pristine waterfront reserve land, boasts extensive water views and has everything you have been wanting in a home.

View : <https://www.wilsonsproperty.com.au/sale/nsw/central-coast-region/horsfield-bay/residential/house/6905020>

Split over two levels the property can be used as two self contained flats, Air BnB accommodation or for a large family home. Do not miss out on this one.

Property features Include:

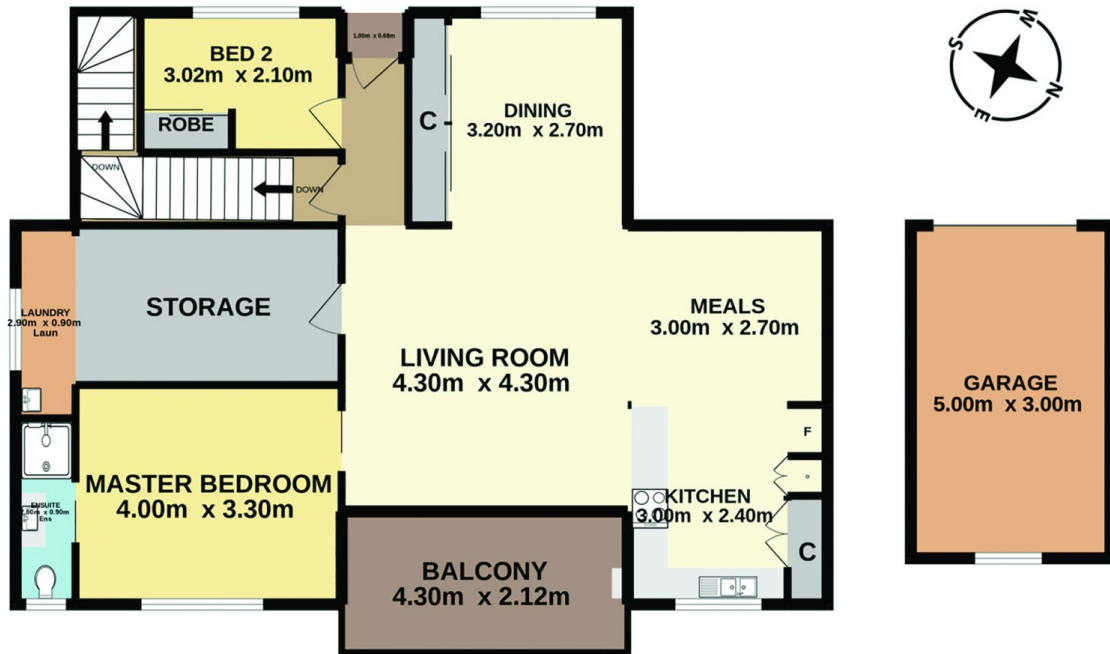
- Two lock up garages + car port
- Two fully functional kitchens
- Two entertaining decks
- Work shop
- Study
- Direct waterfront access



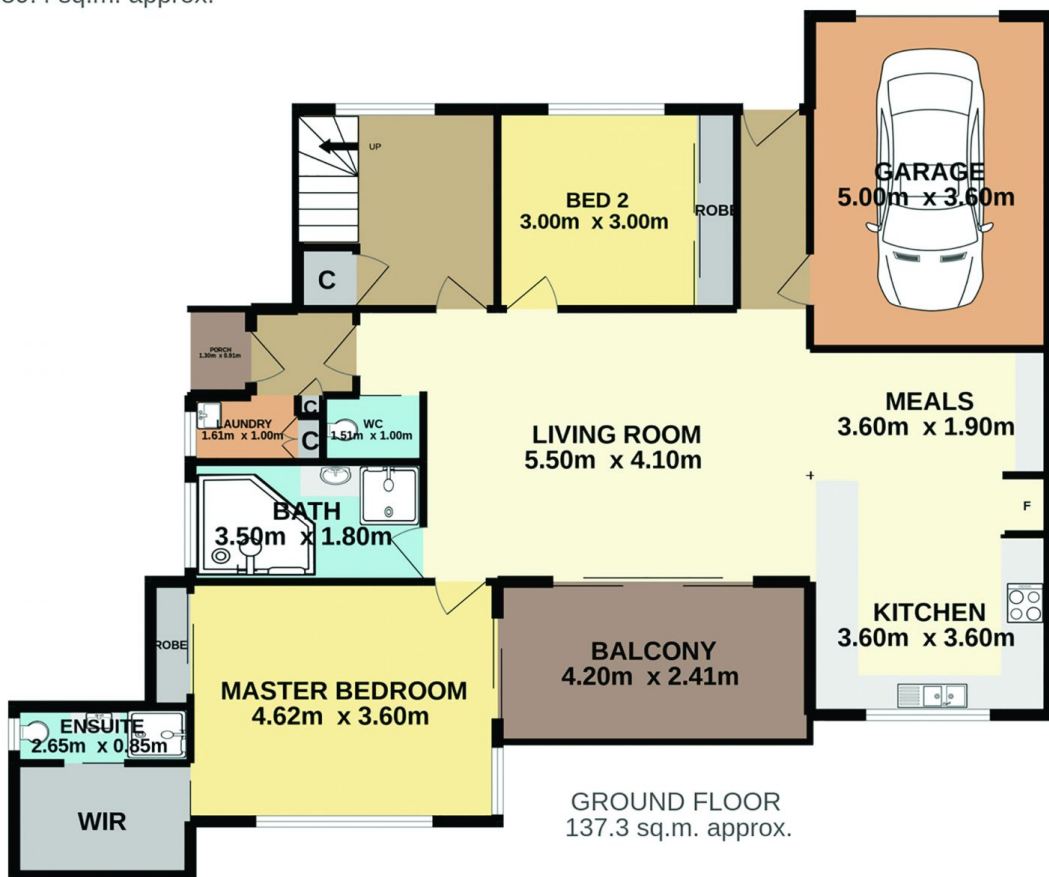
Ty Reynolds
02 4344 2511



Andrew Quilkey
02 4344 2511



1ST FLOOR
89.4 sq.m. approx.



GROUND FLOOR
137.3 sq.m. approx.

10 Horsfield Road, Horsfield Bay

Total Approx. Floor Area 226.7 sq.m.

Measurements are approximate. Not to scale. For illustrative purposes only. Boundaries are approximate.

