



57 Horsfield Road Horsfield Bay NSW

2  2  1 

This property is located in the beautiful suburb of Horsfield Bay, has awesome views and a private bush setting. Perfect for the first home buyer or investor, this free standing home is situated on a massive 1423 square block (approx.) and is a blank canvas perfect for adding value. The rear deck has great views over Brisbane Waters and is only moments from Woy Woy Train Station and close by to the M1 for easy access to Sydney/Newcastle.

Price : \$ 675,000

View : <https://www.wilsonspoperty.com.au/sale/nsw/central-coast-region/horsfield-bay/residential/house/6394425>

Property features include:

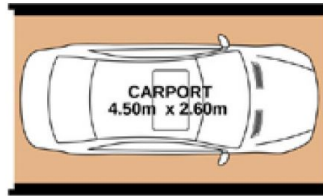
- Large block in a bush setting
- Off street parking
- Spa bath
- Water front reserve
- Large rear deck perfect for entertaining
- Water views



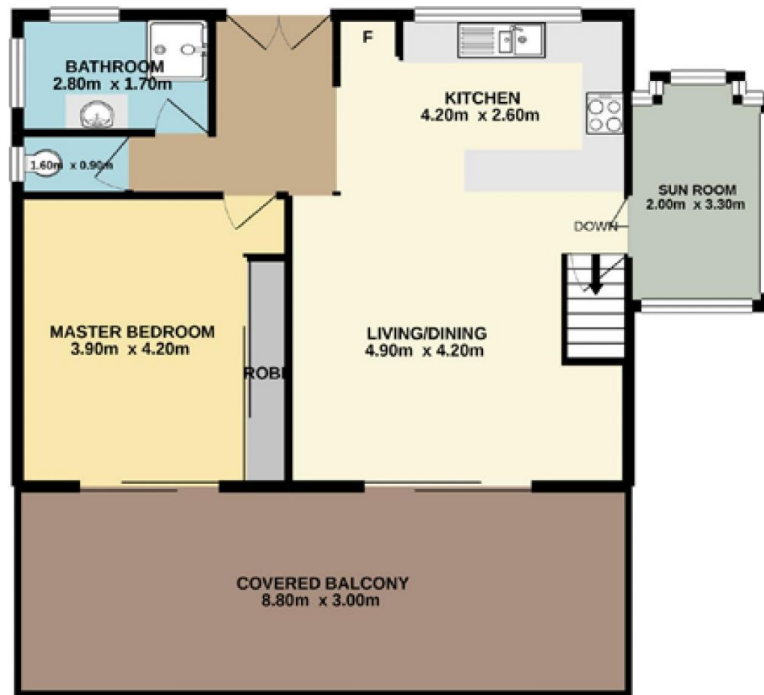
Andrew Quilkey
02 4344 2511



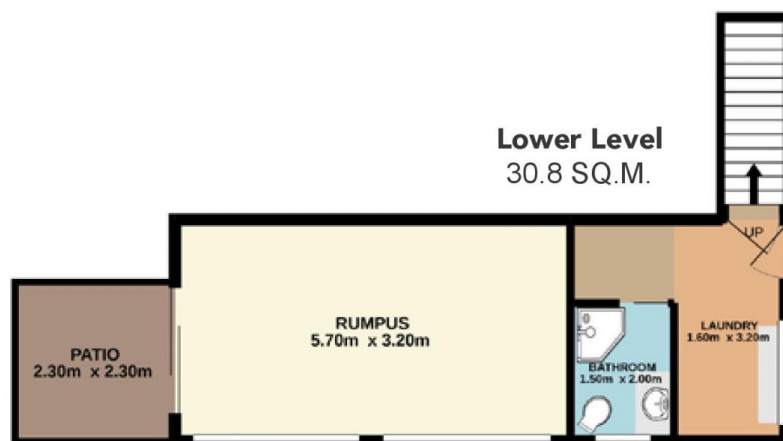
Ty Reynolds
02 4344 2511



Upper Level
77.9 SQ.M.



Lower Level
30.8 SQ.M.

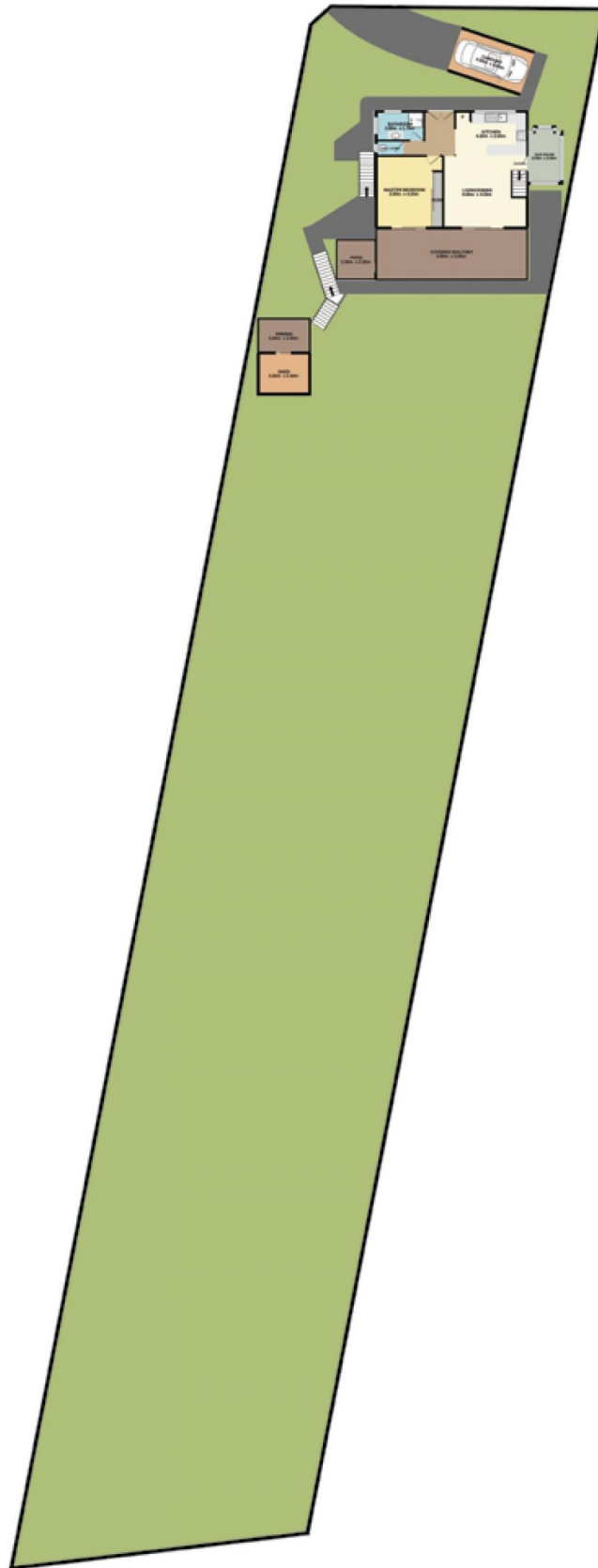


57 Horsfield Road, Horsfield Bay

Total Approx. Floor Area 108.7 SQ.M.

Measurements are approximate. Not to scale. For illustrative purposes only. Boundaries are approximate.

SITE PLAN



57 Horsfield Road, Horsfield Bay

Measurements are approximate. Not to scale. For illustrative purposes only. Boundaries are approximate.