



20 Kunala Lane Horsfield Bay NSW

4 🏠 2 🚗 4 🚗

Retreat to the peace and privacy of this tranquil Bay's home which is nestled in an exclusive enclave of houses perched above Horsfield Bay and offers expansive bush land views.

Located at the end of a quiet cul-de-sac this impressive residence is the perfect size for a family or would be an amazing holiday home. Key features include:

- Large modern kitchen with ceaser stone bench tops
- Open plan living and dining area
- High ceilings to allow an abundance of natural light
- Well appointed modern main bathroom
- Down stairs additional living space and second bathroom
- In ground pool surrounded by timber decking
- Oasis style rear entertaining area
- Single garage plus parking for multiple vehicles

Price : \$ 1,100,000
Land Size : 857 sqm
View : <https://www.wilsonsproperty.com.au/sale/nsw/central-coast-region/horsfield-bay/residential/house/6191447>



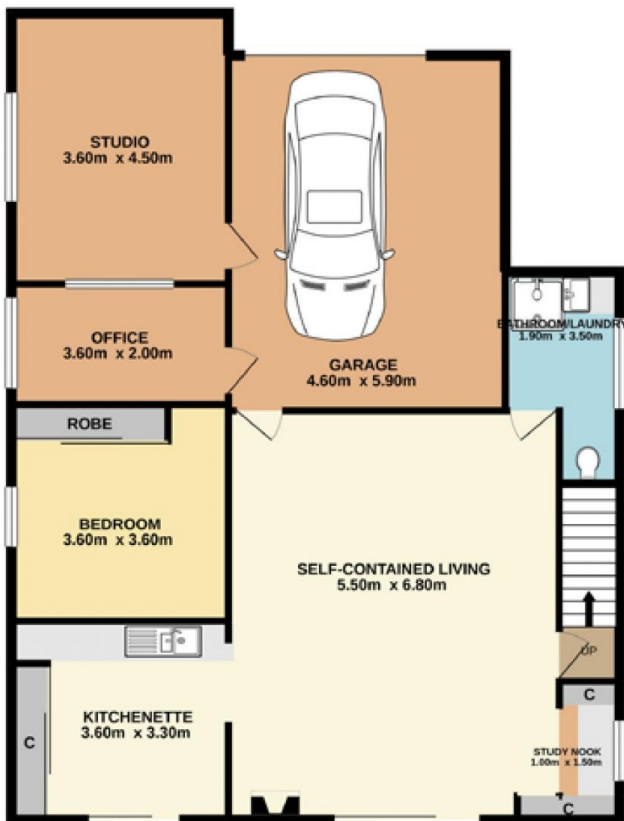
Ian Willis
02 4344 2511



Andrew Quilkey
02 4344 2511



Lower Level
123.6 SQ.M.



Upper Level
126.2 SQ.M.



20 Kunala Lane, Horsfield Bay

Total Approx. Floor Area 249.8 SQ.M.

Measurements are approximate. Not to scale. For illustrative purposes only. Boundaries are approximate.