






75 Brick Wharf Road Woy Woy NSW

5  2  2 

Beautiful views across the picturesque Woy Woy waterways & National Park Backdrop make a spectacular setting for this large five bedroom house on the tightly held Woy Woy waterfront reserve.

The home is currently leased at \$650pw to long term tenants and offers a near blank canvas for a complete renovation or redevelopment into an villa or apartment complex of up to 4 (STCA)

Set on a 929.5sqm waterfront reserve block of land with a sunny North facing Aspect, rear access from sealed carpark with a double garage + sleep out room.

- Sweeping uninterrupted views across Woy Woy waterfront & background National Parks
- 929.5 Sqm of land with plenty of redevelopment potential
- Grand size house with potential
- Possible dual living with attached flat

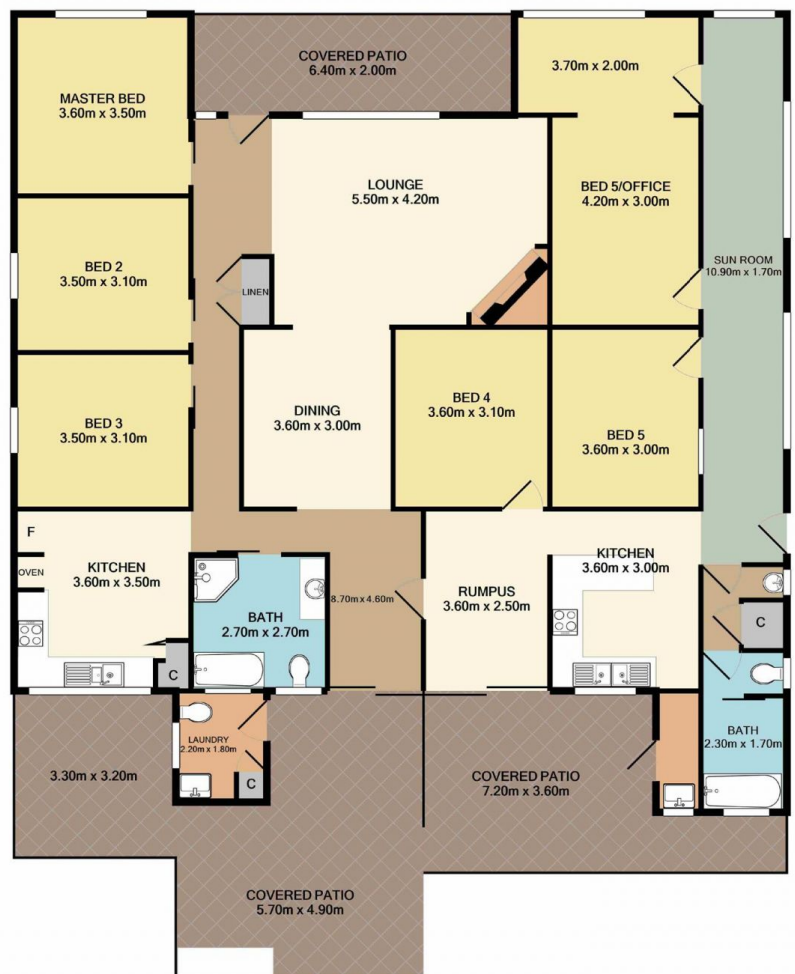
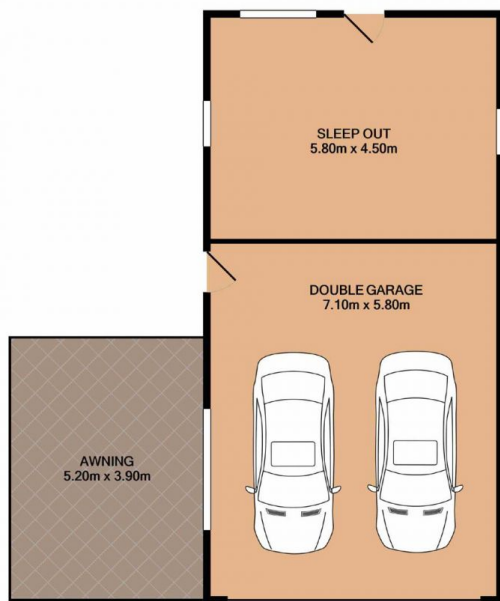
Price : \$ 1,500,000
Land Size : 929.9 sqm
View : <https://www.wilsonsproperty.com.au/sale/nsw/central-coast-region/woy-woy/residential/house/5832603>



Andrew Quilkey
02 4344 2511



Ty Reynolds
02 4344 2511



75 Brick Wharf Road, Woy Woy

Total Approx. Floor Area 269.7 SQ.M. 2903 SQ.FT.

Measurements are approximate. Not to scale. For illustrative purposes only. Boundaries are approximate.

SITE PLAN



75 Brick Wharf Road, Woy Woy

Measurements are approximate. Not to scale. For illustrative purposes only. Boundaries are approximate.