

14 Kunala Lane Horsfield Bay NSW

4 🏠 2 🚗 2 🚗

Retreat to the peace and privacy of this tranquil Bay's retreat nestled in an exclusive enclave of homes perched above Horsfield Bay offering beautiful views. The cedar clad home has been designed in harmony with nature and captures the ambiance of a treetop hideaway with amazing water views over the Bay and Peninsula from both levels framed by native trees. A bright and airy open layout has been designed to accentuate the flow between inside & outdoor living with a view-swept deck creating the perfect extension of the living space.

Positioned in a quiet cul-de-sac street with a double carport and landscaped garden.

- * Ultimate peace, privacy and serenity
- * Cedar clad construction
- * 985.6sqm with two street frontage
- * Amazing views over Horsfield Bay & Woy Woy

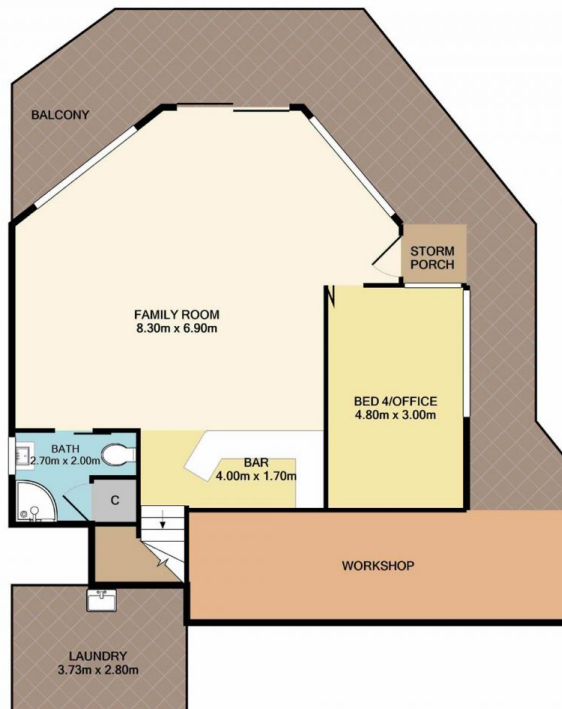
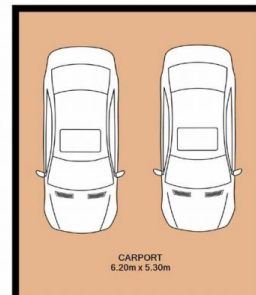
Price : \$ 905,000
Land Size : 985.6 sqm
View : <https://www.wilsonsproperty.com.au/sale/nsw/central-coast-region/horsfield-bay/residential/house/5832538>



Andrew Quilkey
02 4344 2511



Ty Reynolds
02 4344 2511



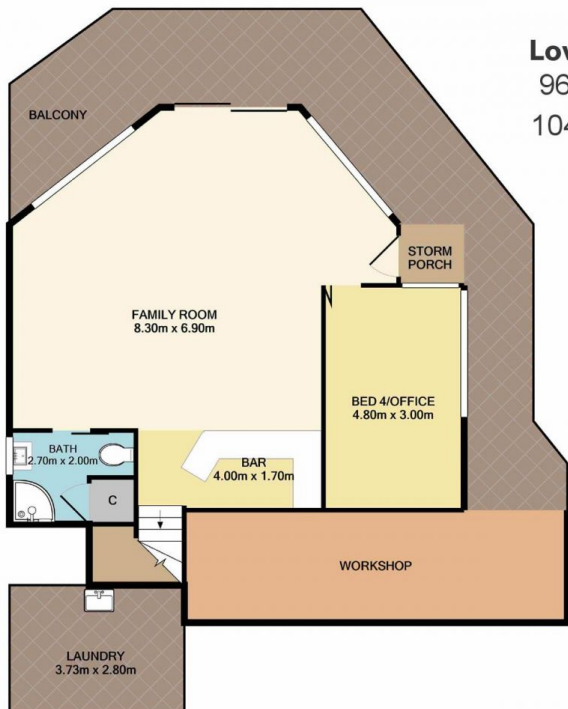
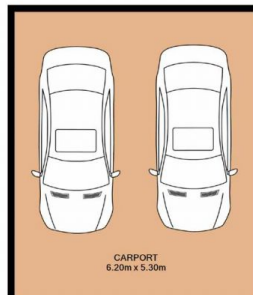
14 Kunala Lane, Horsfield Bay

Total Approx. Floor Area 248.8 SQ.M. 2678 SQ.FT.

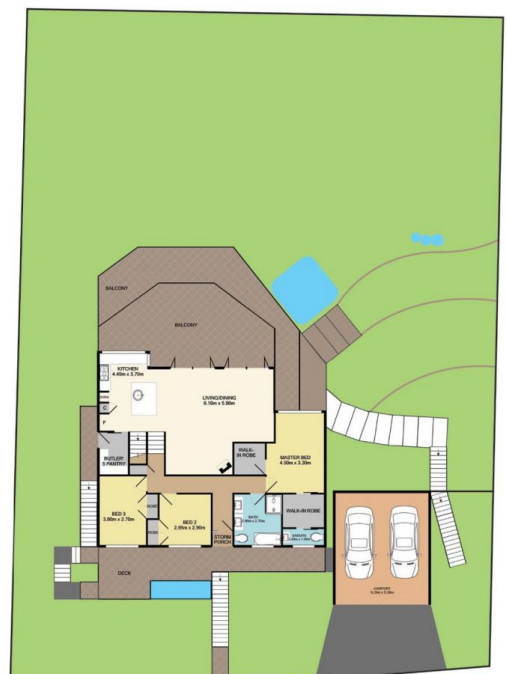
Measurements are approximate. Not to scale. For illustrative purposes only. Boundaries are approximate.



Upper Level
152.1 SQ.M.
1638 SQ.FT.



Lower Level
96.7 SQ.M.
1040 SQ.FT.



14 Kunala Lane, Horsfield Bay

Total Approx. Floor Area 248.8 SQ.M. 2678 SQ.FT.

Measurements are approximate. Not to scale. For illustrative purposes only. Boundaries are approximate.