






31 Taylor Street Woy Woy Bay NSW

3  3  2 

Beautiful views across the picturesque Woy Woy Bay & National Park Backdrop make a spectacular backdrop to this large three bedroom house on the tightly held Woy Woy Bay waterfront.

Spacious in design and providing a stunning view from the main bedroom, living room, dining room and kitchen, as well as offering a 2nd living area two other large bedrooms and a home office space.

Set on a 1034sqm absolute waterfront block of land with a sunny North facing Aspect, tandem carport with extra height and width for a caravan, boat or motor home.

- Sweeping uninterrupted views across the bay & National Parks
- 1034 Sqm of land with plenty of parking & low maintenance grounds
- Oversized carport + large workshop

Land Size : 1034 sqm

View : <https://www.wilsonsproperty.com.au/sale/nsw/central-coast-region/woy-woy-bay/residential/house/5832495>



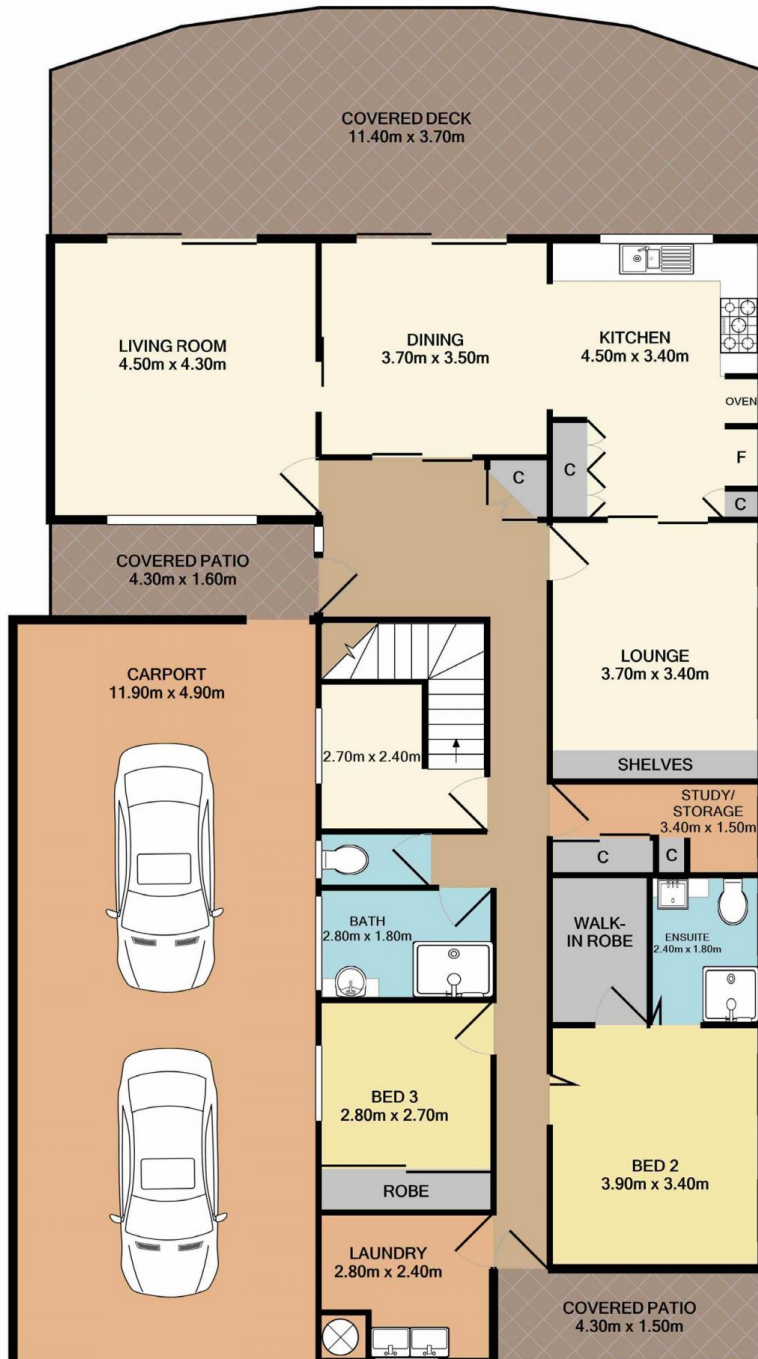
Andrew Quilkey
02 4344 2511



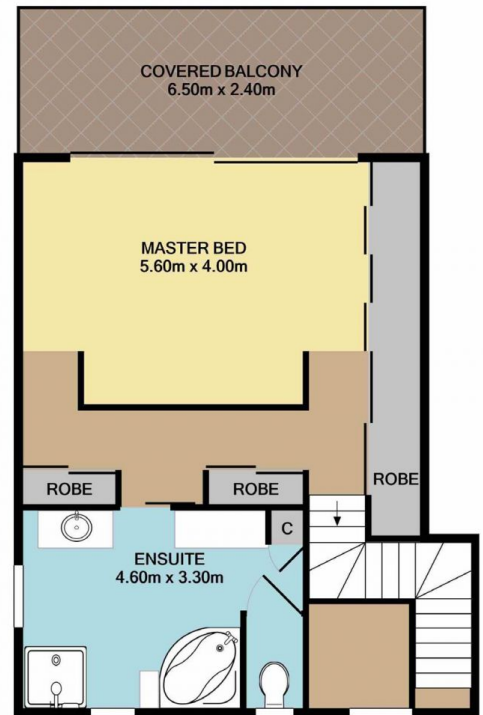
Ty Reynolds
02 4344 2511



Lower Level
199.0 SQ.M.
2142 SQ.FT.



Upper Level
60.1 SQ.M.
647 SQ.FT.



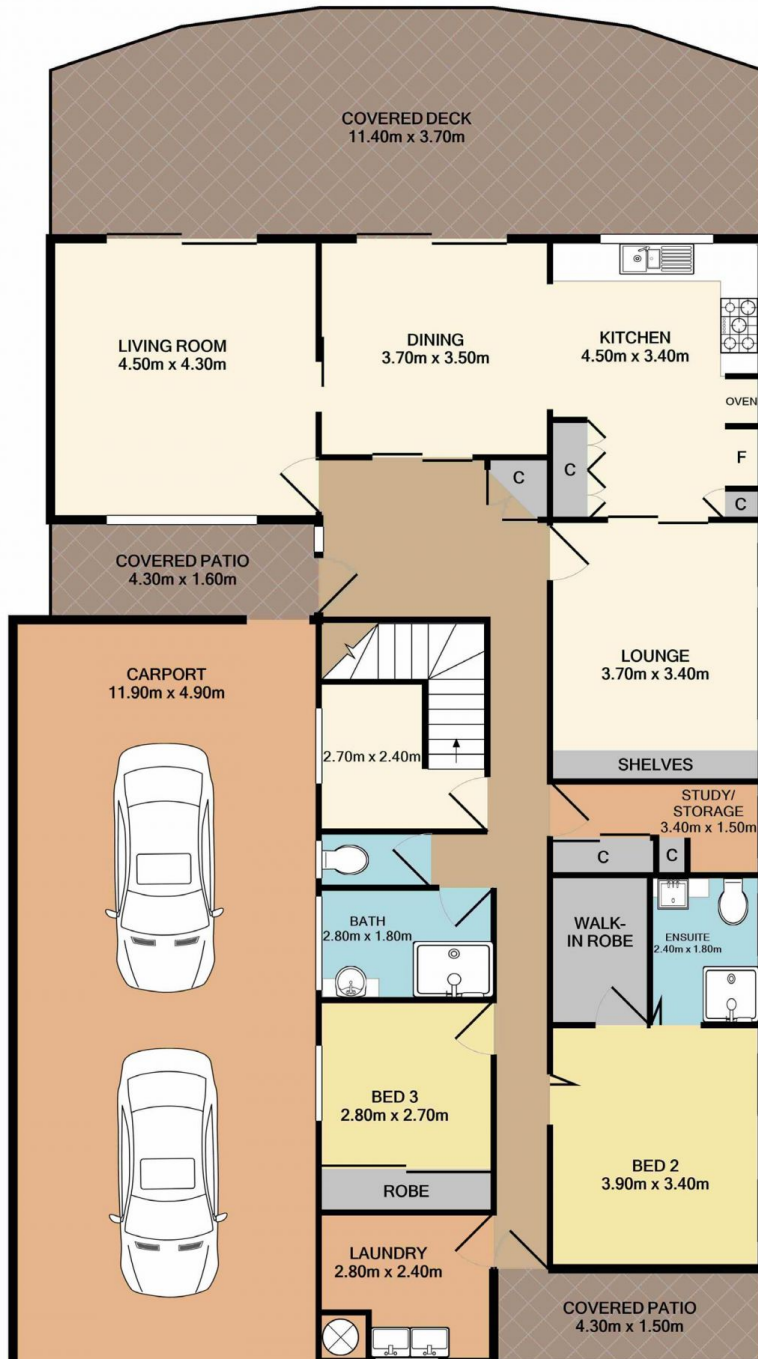
31 Taylor Street, Woy Woy Bay

Total Approx. Floor Area 259.1 SQ.M. 2789 SQ.FT.

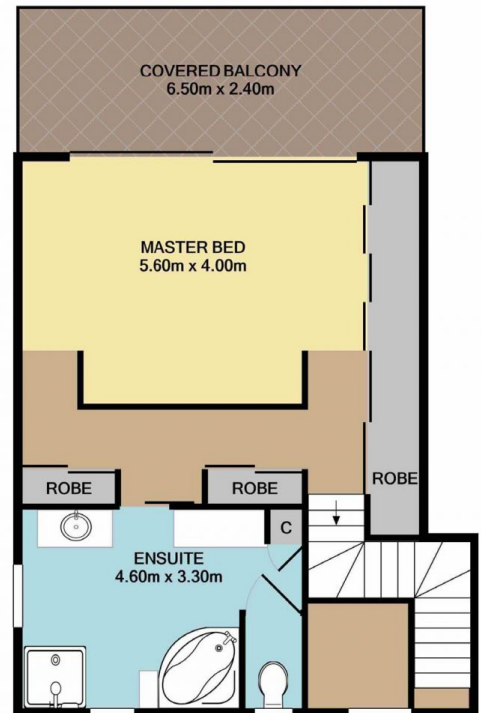
Measurements are approximate. Not to scale. For illustrative purposes only. Boundaries are approximate.



Lower Level
199.0 SQ.M.
2142 SQ.FT.



Upper Level
60.1 SQ.M.
647 SQ.FT.



31 Taylor Street, Woy Woy Bay

Total Approx. Floor Area 259.1 SQ.M. 2789 SQ.FT.

Measurements are approximate. Not to scale. For illustrative purposes only. Boundaries are approximate.