





2/70 Robin Crescent Woy Woy NSW

3  2  1 

This is a really rare offering, a low maintenance villa home located in the prestigious Garden of Adin area.

Situated in a small block of only two, 2/70 Robin Crescent is located at the rear and offers a short walk to Woy Woy waterfront, train station and CBD.

Other key features include:

- Three bedrooms with ensuite and walk in robe to main
- Built in robes to second and third bedrooms
- Spacious north facing kitchen with bay window
- Large tiled dining area
- Ducted air conditioning
- Low maintenance courtyard
- Single lock up garage
- Strata fees \$400 per quarter

Price : \$ 608,000

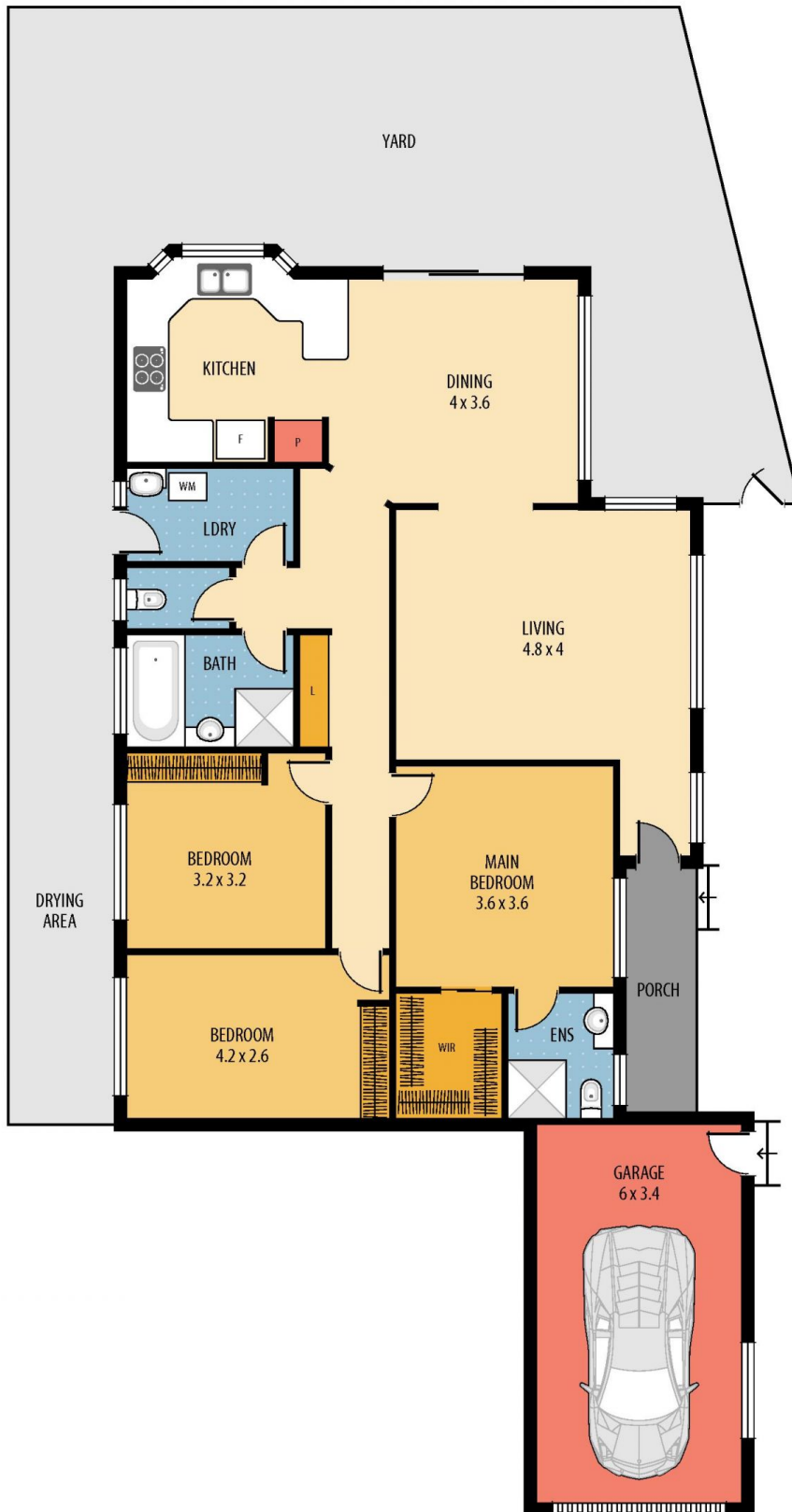
View : <https://www.wilsonsproperty.com.au/sale/nsw/central-coast-region/woy-woy/residential/villa/5832419>



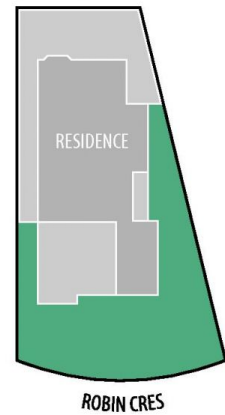
Ian Willis
02 4344 2511



Ty Reynolds
02 4344 2511



SITE PLAN
(not to scale)



SCALE
0 0.5 1 2 4m

2/70 ROBIN CRES, WOY WOY



Disclaimer: This information has been provided to us from the vendor and or their conveyancer or solicitor, no guarantee is given in respect of its accuracy. Any person viewing this information should make their own enquiries and only rely on those enquiries.

