

#### 46-48 Ocean Beach Road Woy Woy NSW

7 🚗

Outstanding opportunity to lease high visibility industrial / warehouse position on the on major Woy Woy Peninsula Intersection.

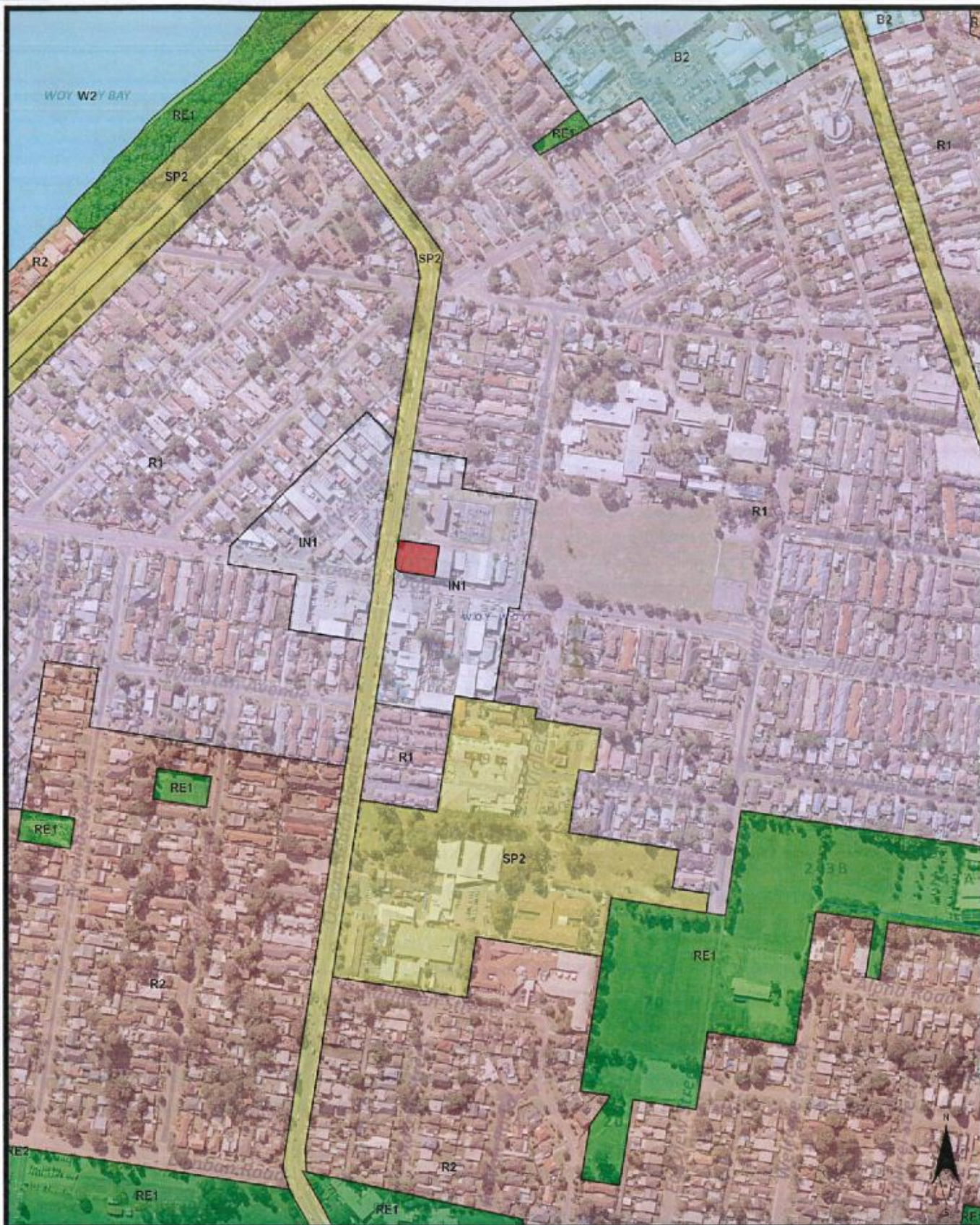
- short term lease available
- approx. 250m2 with carparking
- further option of storage

**Price** : \$36,000 pa  
**Building Size** : 1400 sqm  
**Land Size** : 1810 sqm  
**View** : <https://www.wilsonsproperty.com.au/lease/nsw/central-coast-region/woy-woy/commercial/showroomsbulky-goods/5832349>



**Greg Quilkey**  
02 4244 2544





Copyright Information  
 © 2015 Gosford City Council  
 © 2014 Land Property Information  
 © 2014 SGA - 2014 Aerial Photography  
 © 2012 Volo - 2012 Aerial Photography  
 © 2010 SGA - 2010 Aerial Photography  
 © 2007 SGA - 2007 Aerial Photography  
 © 2005 AAM - 2005 Aerial Photography  
 © 2011 MapData Sciences Pty Ltd, PMAA

## Gosford Electronic Mapping System

0 37.5 75 150 225 300 Metres

Date: 22/10/2015 Time: 11:39:30 AM

Projection: GDA 1994 Transverse Mercator: GCS\_GDA\_1994  
 Created using ESRI ArcGIS 10.2

**DISCLAIMER:**  
 These maps have been compiled from various sources and the publisher and/or contributors accept no responsibility for any injury, loss or damage arising from the use, error or any omission therein. While all care is taken to ensure a high degree of accuracy, users are invited to notify Council's GIS Group of any map discrepancies. No part of this map may be reproduced without prior written permission. Measurements made within the mapping application should be treated as approximate only and are not survey accurate.

