



6 Lovell Road Umina Beach NSW

3  1  1 

This solid, well-loved home is an absolute ripper and should definitely be on your inspection list.

Constructed of brick and tile, the house features 3x bedrooms (all with built in robes), spacious living area, ample kitchen space and a tidy bathroom with separate toilet.

Outside there is a single, drive through garage plus an additional under cover storage area and is located on a 512m² (approx) level block.

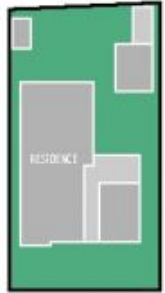
Location wise, you are approximately a 7 minute drive to either Woy Woy train Station or Umina Beach Surf Life Saving club, with shopping centres, parks, golf and bowling clubs in between.

Price : \$ 575,000
Land Size : 512 sqm
View : <https://www.wilsonsproperty.com.au/sale/nsw/central-coast-region/umina-beach/residential/house/5832121>



Ian Willis
02 4344 2511

SITE PLAN
(not to scale)



LOWELL RD



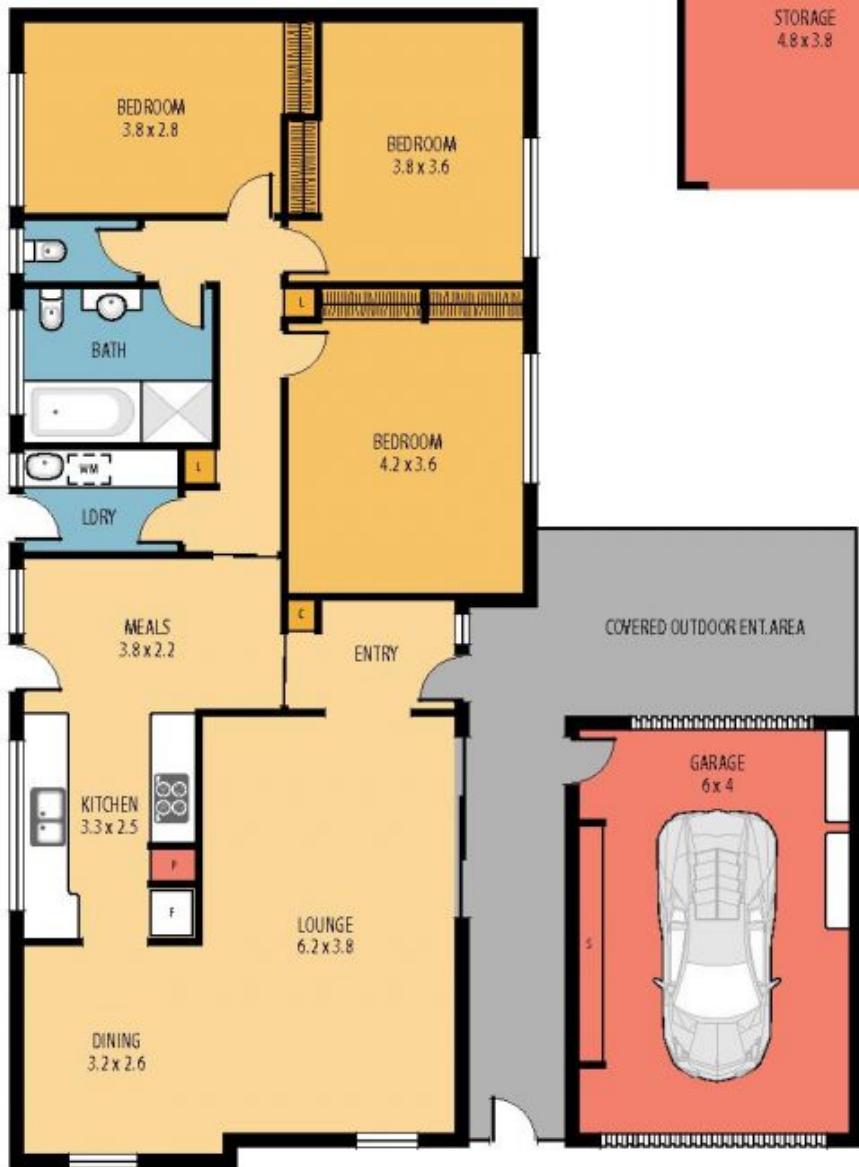
STORAGE
3 x 2



GREEN HOUSE
3.8 x 2



STORAGE
4.8 x 3.8



6 LOVELL RD, UMINA BEACH



Disclaimer: This information has been provided to us from the vendor and/or their conveyancer or solicitor, no guarantee is given in respect of its accuracy. Any person viewing this information should make their own enquiries and only rely on those enquiries.

