






## 10 Wattle Crescent Phegans Bay NSW

5  2  2 

Tastefully renovated home using a mixture of original features combined with modern styling to create this unique and fantastic Bays oasis with Panoramic Views.

Designed to take full advantage of captivating views, this stunning Bays home has been conceived as a forever family home with a strong connection to its bush land surroundings & Views. A two-story design seeing ample living, bedroom and bathroom spaces on both levels which capture the outside views and surrounds from every angle.

- Level entry from the street
- Two off street parking spaces
- 5 Good size bedrooms
- Sun Drenched Block of Land
- Two designer bathrooms
- Two separate living areas
- Ducted Airconditioning

**Land Size** : 721 sqm

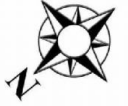
**View** : <https://www.wilsonsproperty.com.au/sale/nsw/central-coast-region/phegans-bay/residential/house/5832020>



**Andrew Quilkey**  
02 4344 2511



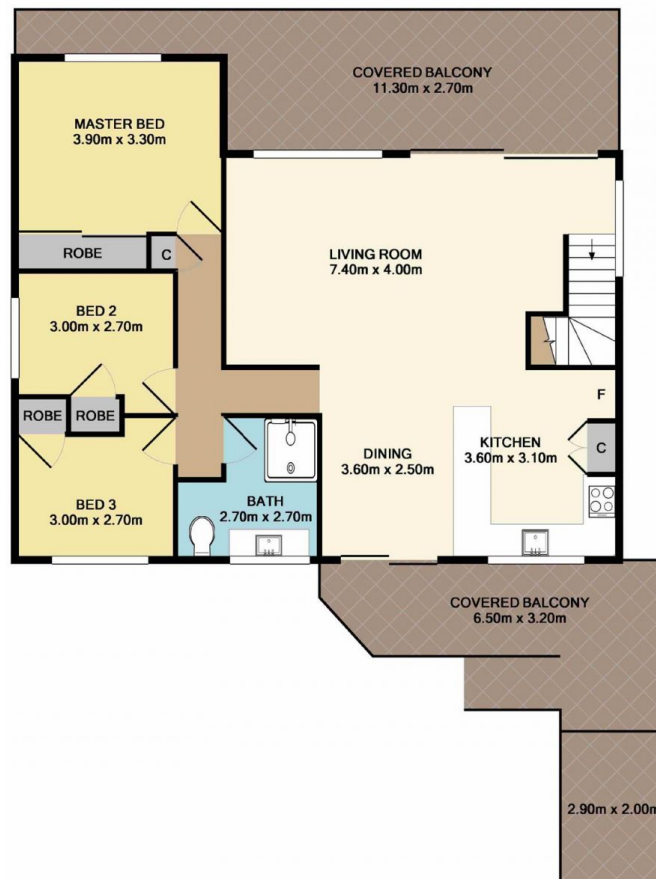
**Ty Reynolds**  
02 4344 2511



**Lower Level**  
97.7 SQ.M.  
1051 SQ.FT.



**Upper Level**  
92.9 SQ.M.  
1000 SQ.FT.



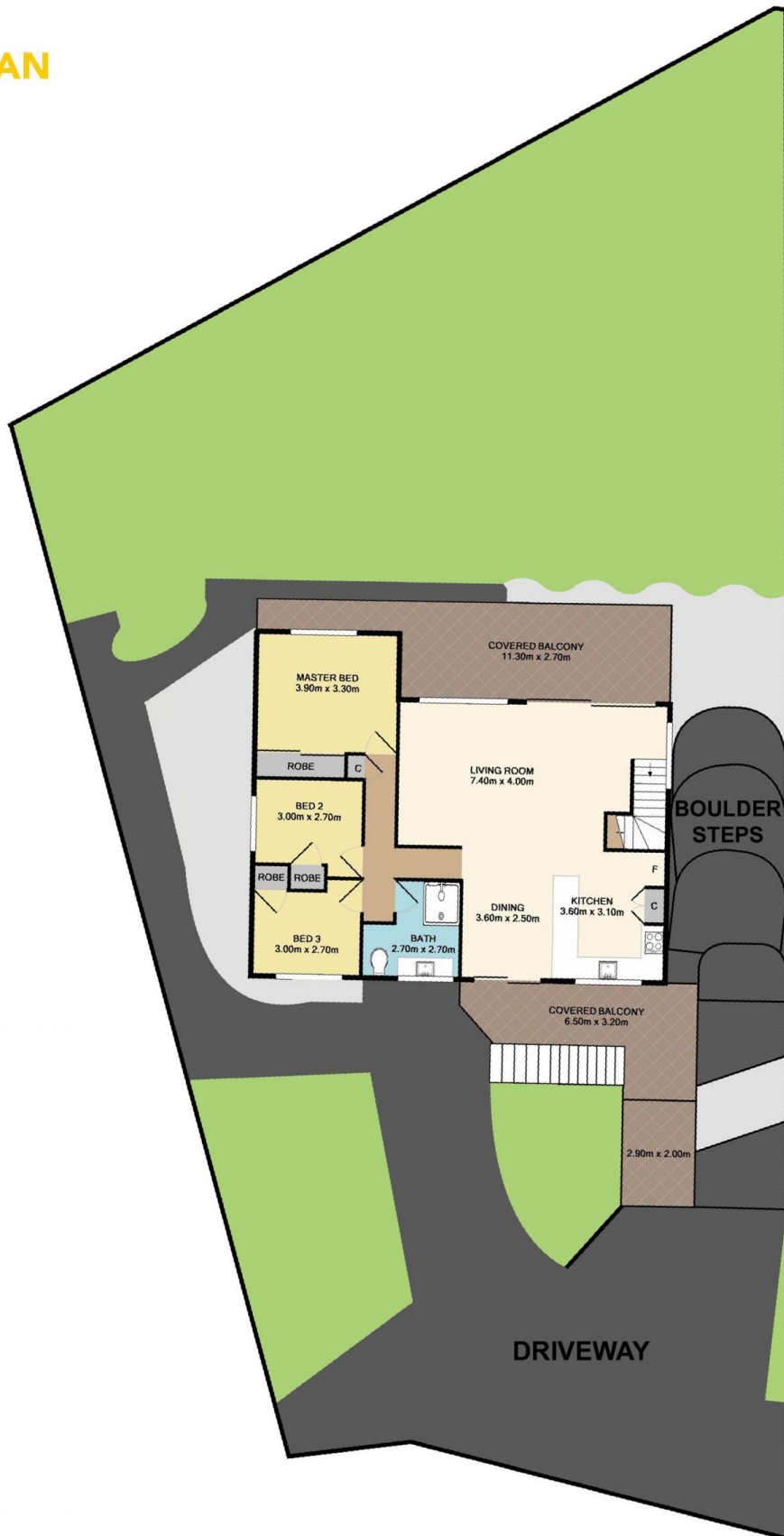
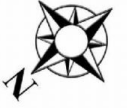
GROUND FLOOR

## 10 Wattle Crescent, Phegans Bay

Total Approx. Floor Area 190.6 SQ.M. 2051 SQ.FT.

Measurements are approximate. Not to scale. For illustrative purposes only. Boundaries are approximate.

## SITE PLAN



## 10 Wattle Crescent, Phegans Bay

Measurements are approximate. Not to scale. For illustrative purposes only. Boundaries are approximate.